



KENTUCKY TRAILER

A Servant Leader Company

Kentucky Trailer
7201 Logistics Drive
Louisville, KY 40258
(502) 637-2551
(502) 636-3675 fax
(888) 598-7245 toll free

Custom Trailer & Truck Body Manufacturing



KENTUCKY TRAILER

A Servant Leader Company

Truck Body Options and Additional Features

Aluminum or Translucent roof

12" O.C. Cross members

16" Double slotted logistic posts (white vinyl lining)

Additional Doors • Multiple door locations • Roll-Up rear doors

Polished Stainless Steel corner post overlays

Sliding Loading Platform

Custom lengths, width and heights

Rear Frame Hinge Protector Extension

Tailored Attic sizes

Liftgates (hydraulic/electrical)

- Tuck under • Rail Gates • Level-Lift

Custom Built Sleepers

Storage Boxes

Paint / Decal

- Body Painting • Decal application • Chassis painting

Kentucky Trailer Pallet Van Body

Custom Pallet Door Configurations

Roadside Door

- One (1) 48" Wide

Anodized Aluminum Flush Lock Pans With Stainless Steel Handle

White Plywood "No Seam" Interior

Unique Reinforced Side Door Threshold

Single Sided or Double Sided (staggered doors)

Purpose Built Truck Bodies

Purpose Built Truck Bodies



Contact:

kytrailer.com

©2015 KENTUCKY TRAILER / KT0918



kytrailer.com



What Makes The Kentucky Trailer Truck Body "Uniquely Kentucky..."

Customers can rely upon the experience of veteran craftsmen to create their ideal Kentucky Truck Body. From concept to reality, Kentucky Trailer creates Truck Bodies that are purpose-built to last and to meet your specific requirements.

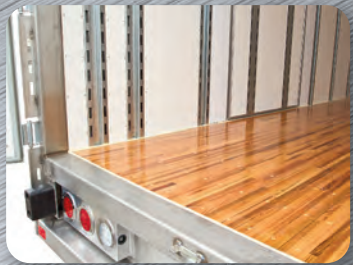


Purpose Built Truck Bodies

Purpose Built Truck Bodies

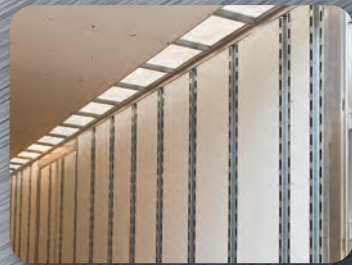
Door Frame Threshold Flush with Oak Floor

Bottom door sill routed into floor edge for a smooth transition on side and rear doors.



White Plywood "No Seam" Interior

Full height white plywood interior without joint seam, forming a strong, non-snag finish with double slotted "A" Track on all side doors.



Oversized Kentucky Trailer Cast Aluminum Corner Caps

The largest in the industry, our corner caps overlap the panels forming a stronger corner and allowing for improved damage resistance.



Rain Gutter Rear Header

Strong structure reinforced to protect rear roof seam and rear door hinges.



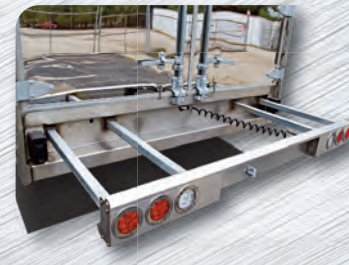
Bonded Skin Side Doors

Bonded skin side door panels with recessed door hardware and stainless steel holdbacks for improved corrosion resistance.



Sliding Loading Platform (SLP)

A durable, stainless steel and aluminum Sliding Loading Platform (SLP) eases the labor-intensive task of loading and unloading.



The Only Choice In Moving and Storage Truck Bodies.



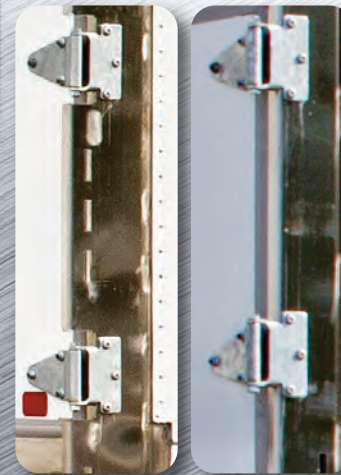
Interior LEDs

Complete illumination from front to rear with 50,000 hour long life LED's.



Rear Frame Options

Standard hinge protection or optional slotted posts



Dock Bumpers and Optional Step

Standard dock bumpers with optional step. Dock bumpers designed to protect rear hinges and frame from damage.



Movers' Rear Sill

Reinforced stainless steel light panel with recessed LED license plate light and tag mount.

DuraPlate® Full Swing Rear Doors

The DuraPlate® full swing rear doors feature Eberhard® "anti-rack" lock rods and five (5) heavy duty galvanized steel hinges per door.

Improved Walk Board Door Design

Provides service and ease of walk board access.

Enhanced Rear Light Panel

Reinforced oversized stainless steel Kentucky light panel with incorporated rear impact guard.

Low Floor Height

Provides lower angle of entry which allows an easier and safer access to cargo area.

kytrailer.com

kytrailer.com